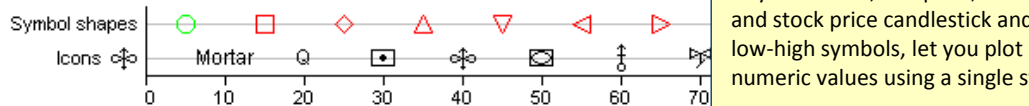


DataMontage enables you to encode multiple attributes per data point using symbol shapes, colors, size, error bars, and custom icons. Multi-valued symbols, such as y error bars, box plots, diamond plots, and stock price candlestick and open-close-low-high symbols, let you plot multiple numeric values using a single symbol.



DataMontage provide three programs for displaying interactive DataMontage graphical displays:

- The DataMontage **Viewer** application enables you to open, display, print, save, and create image files from DataMontage graphical displays read from a file system or accessed via web server. The Viewer can be run as a desktop application or via Java WebStart using all-permissions.
- The DataMontage **WebViewer** application enables you to display DataMontage graphical displays accessed via web server. The Viewer can be run using Java WebStart using sandbox permissions.
- The DataMontage **Java applet** enables you to display DataMontage graphical displays within Web browsers, accessed via web server. The applet can be run using the web browser's Java plug-in using sandbox permissions.

You can also view interactive DataMontage displays using **custom** Java software applications or applets that embed the DataMontage software library.

The DataMontage **Editor** enables you to create and edit the content, layout, and appearance of graphical displays easily. You can use the Editor to create graphical displays to review data, create graph mockups, and create graph templates that are populated with data by a software application that embeds the DataMontage run-time library.

The screenshot shows the DataMontage Editor window titled "summary\_timeline.xml". The left pane shows a tree view of the data structure, including categories like Glycemia, BP, Lipids, Complications, Meds, and Labs. The right pane shows a table of data points for FPG (Fasting Plasma Glucose) with columns for Variable Name, DateTime, Symbol Group ID, Y Value, and Y1, Y2, Y3. A yellow callout box on the right states: "The DataMontage Editor lets you specify the data content, layout, and formatting of graphical displays. The Overview Pane at left shows an icon for each graph object, such as a module, XY graph, timeline, or graph container. Using the Details Pane at right, you can specify the data content and appearance of the selected graph object."

	Variable Name	DateTime	Symbol Group ID	Y Value	Y1	Y2	Y3
1	FPG	2000-09-28	high	156.0			
2	FPG	2000-10-23	high	156.0			
3	FPG	2001-11-26	high	250.			
4	FPG	2001-11-27	high	207.			
5	FPG	2001-11-28	high	215.			
6	FPG	2001-12-07	high	180.			
7	FPG	2001-12-14	high	174.			
8	FPG	2001-12-21	high	140.			
9	FPG	2002-01-04	high	130.			
10	FPG	2002-04-05	high	119.			
11	FPG	2002-07-12	high	131.			
12	FPG	2002-10-01	high	211.			
13	FPG	2002-10-30	high	111.			
14	FPG	2003-01-16	normal	77.			

## Contact

For additional information about DataMontage, contact Jim Ong by phone at (650) 931-2700 or by e-mail at [ong@stottlerhenke.com](mailto:ong@stottlerhenke.com).