

Read-On!

Teaching Reading Skills to Adult Learners

Appropriate Instruction Based on Students' Abilities

Read-On!™ is a computer-based tutor for teaching reading comprehension skills to adults. Working with adult reading skills instructors, Stottler Henke Associates, Inc. developed an intelligent reading tutor that automatically assesses and diagnoses each student's specific reading skill deficiencies and tailors its instruction accordingly.

It employs innovative techniques to estimate proficiency levels of interrelated, high-level and low-level reading skills. A scaffolding mechanism helps students learn difficult skills by presenting exercises that build upon skills already mastered. In addition, the system helps students understand the relationship between the various aspects of reading and how they can be put together to achieve a high level of comprehension. By encouraging reflection, the software helps students to understand the text in more depth.

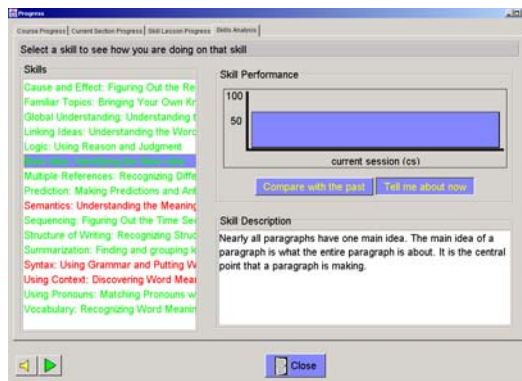


Figure 1: The tutor maintains a fine-grained assessment of the student's reading skills. The student will work on the skills highlighted in red.

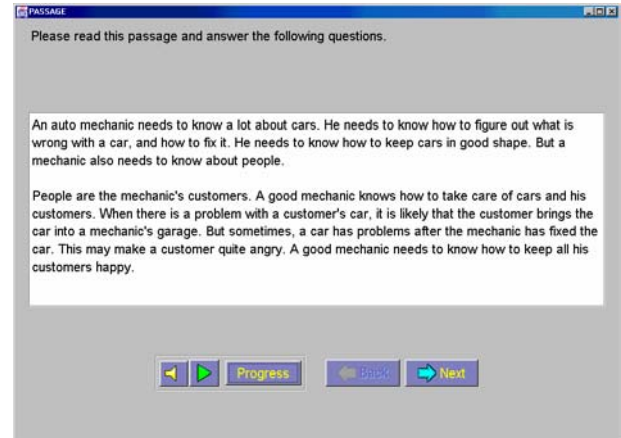


Figure 2: Assessment of student skills is done in the context of reading grade appropriate text and answering questions based on the text

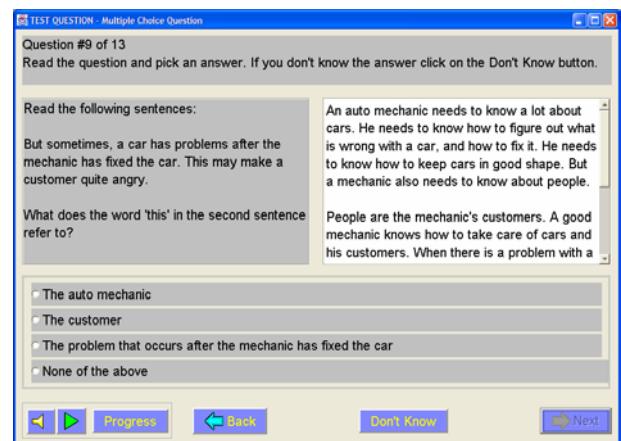


Figure 3: Each question addresses one or more important reading comprehension skills.

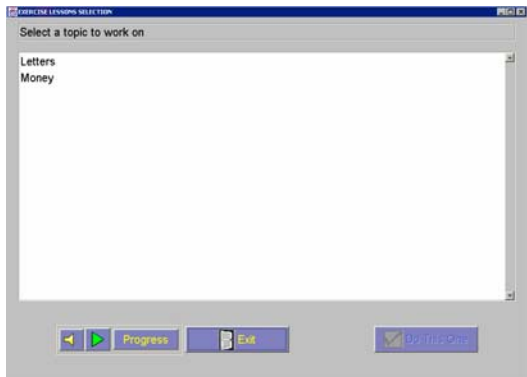


Figure 4: A diverse range of topics can be authored to tailor the tutor to the student's interests.

Material That Makes Sense

Studies show that adult reading instruction is significantly more effective when the reading material is related to each student's personal interests and career goals. Thus, the reading tutor includes an authoring tool that enables course designers to create relevant reading material without programming. For example, a manufacturing company could include reading material related to manufacturing process guidelines and instructions, so employees can acquire reading-skills and learn work-related material at the same time.

Read-On!™ includes an authoring tool that lets organizations create their own content and reading exercises. The content is therefore entirely customizable.

Read-On! Applications

The reading tutor has received considerable interest from community colleges and adult education centers. It can be used by commercial organizations to improve workplace literacy, and it can be used to teach content material for other subjects besides reading. Because it assesses and assists each student's reading comprehension at a deep level, it can be used to help people understand written instruction, rules and regulations, and instructional manuals.

About Stottler Henke Associates, Inc.

Stottler Henke Associates, Inc. develops and deploys innovative, practical software systems that apply artificial intelligence (AI) technologies to solve problems that defy solution using traditional approaches.

For more information, contact Sowmya Ramachandran at (650) 931-2700 or at sowmya@stottlerhenke.com.

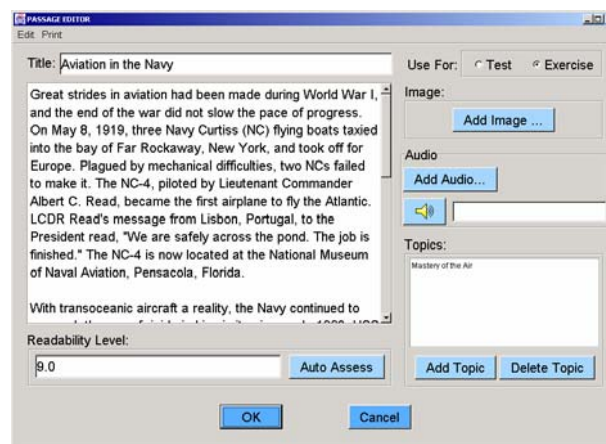


Figure 5: Organizations can customize the content by using the authoring tool to create reading exercises.